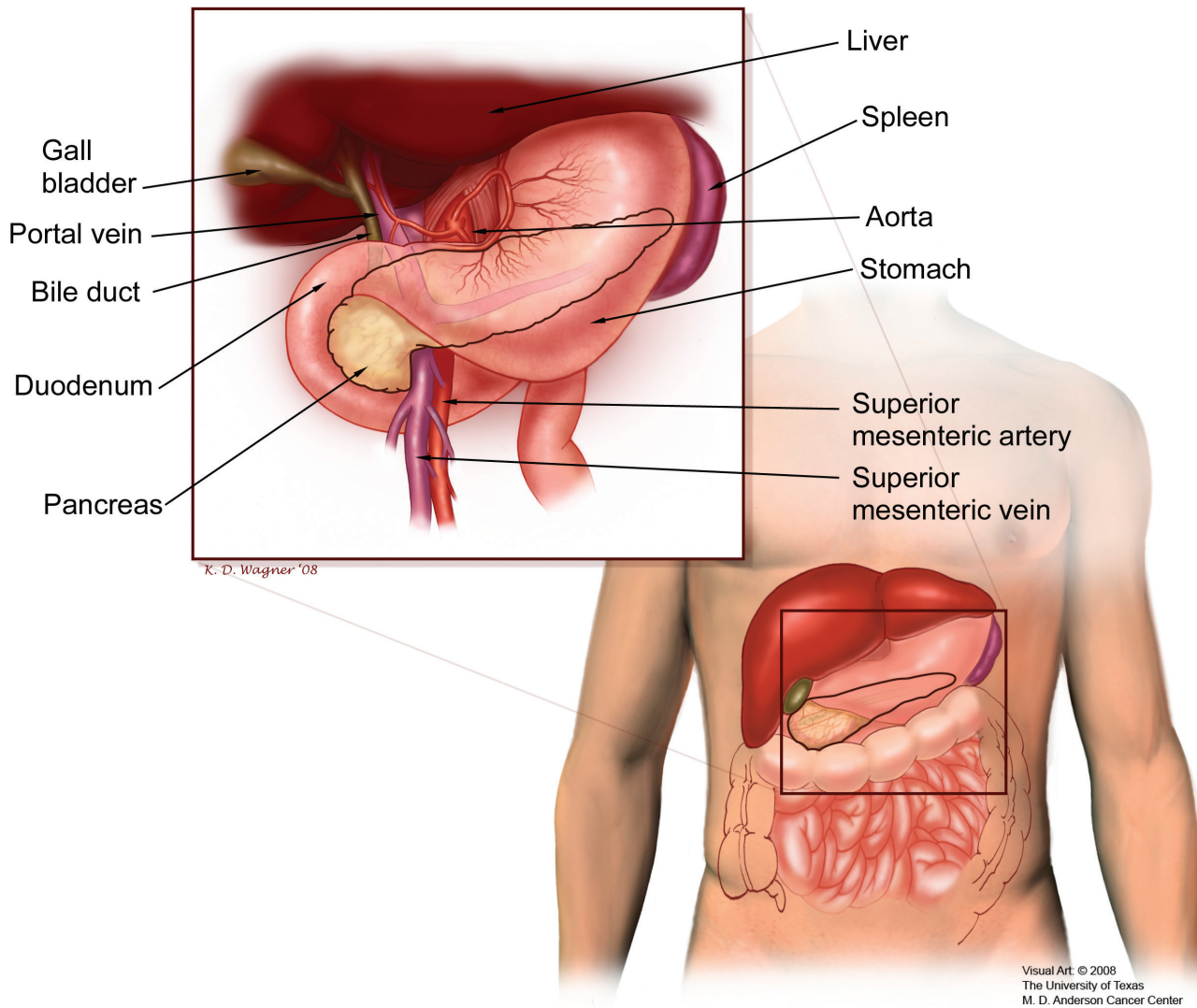


# PANCREAS AND DIGESTIVE SYSTEM



What are the goals and next steps for my treatment plan?

---

---

---

For additional resources and support,  
**CONTACT PanCAN PATIENT SERVICES**

877-2-PANCAN | [patientservices@pancan.org](mailto:patientservices@pancan.org) | Monday – Friday, 7 a.m. – 5 p.m., Pacific Time

# PATIENT SERVICES: THE PLACE TO GO AFTER A PANCREATIC CANCER DIAGNOSIS

PANCREATIC  
CANCER  
ACTION  
NETWORK

**Pancreatic Cancer Action Network (PanCAN) Patient Services gives patients, caregivers and loved ones critical support and information – all for free – sharing resources and speaking with more pancreatic cancer patients than any single organization in the world.**

**Our vision is to create a world in which all patients with pancreatic cancer will thrive.**

At any point, contact us with any questions or needs, including:

- Personalized information about treatment options
- Support resources, including our Survivor & Caregiver Network and support groups
- Diet and nutrition information
- Help finding financial and insurance resources

Every time you contact us, you'll work with the same compassionate and expertly trained case manager. Services are available in English and Spanish.

## PERSONALIZED SUPPORT TO GET ON “THE RIGHT TRACK”

**Patient Services can explain your options and provide services and resources to help get you on “The Right Track”:**



### RIGHT TEAM

See a pancreatic cancer specialist to improve your outcome. Patient Services can give you a list of specialists in your area so you can get the proper diagnosis and treatment.



### RIGHT TESTS

Get genetic testing for inherited mutations and biomarker testing of tumor tissue to determine the best treatment options for you. Patient Services can help you access this testing and understand your results and next steps.



### RIGHT TREATMENT

Consider clinical trials and precision medicine at every treatment decision. Patient Services can run a personalized search to find clinical trials and help you access targeted therapies identified through biomarker and genetic testing.



### SHARE AT EVERY STEP

PanCAN's Patient Registry is a global online database created to look for patterns that will lead to improved treatment options and outcomes. Join and share your experiences at [pancan.org/patientregistry](https://pancan.org/patientregistry).

PANCREATIC  
CANCER  
ACTION  
NETWORK

1500 Rosecrans Avenue, Suite 200  
Manhattan Beach, California 90266  
[pancan.org](https://pancan.org)

**Contact PanCAN Patient Services for information and support:  
877-2-PANCAN or [patientservices@pancan.org](mailto:patientservices@pancan.org)**